

Installation of TED 5000

The following images are simply a visual for the steps taken for the installation of TED. This is *not* a substitute for reading the detail installation instructions In the Instruction Manual.

Before installation, read the Installation and Instruction Manuals and understand fully the Safety requirements.



Three components of TED5000 mount in the electrical panel:

MTU Power Cable



CTs (Current Transformers)



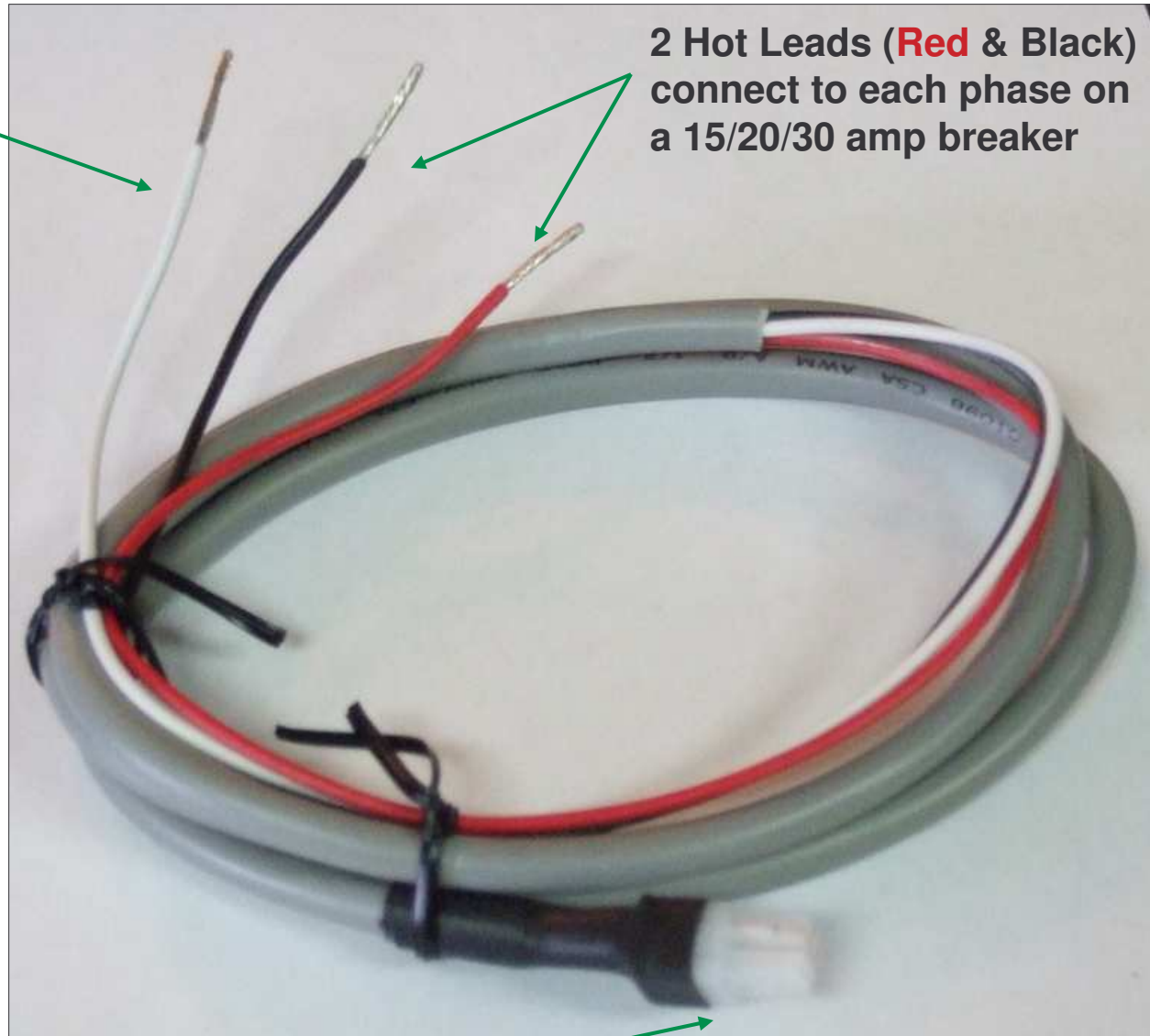
MTU

(Measuring Transmitting Unit)

MTU Power Cable

White connects to
Neutral Bus

2 Hot Leads (**Red** & **Black**)
connect to each phase on
a 15/20/30 amp breaker



Molex plug fits into MTU

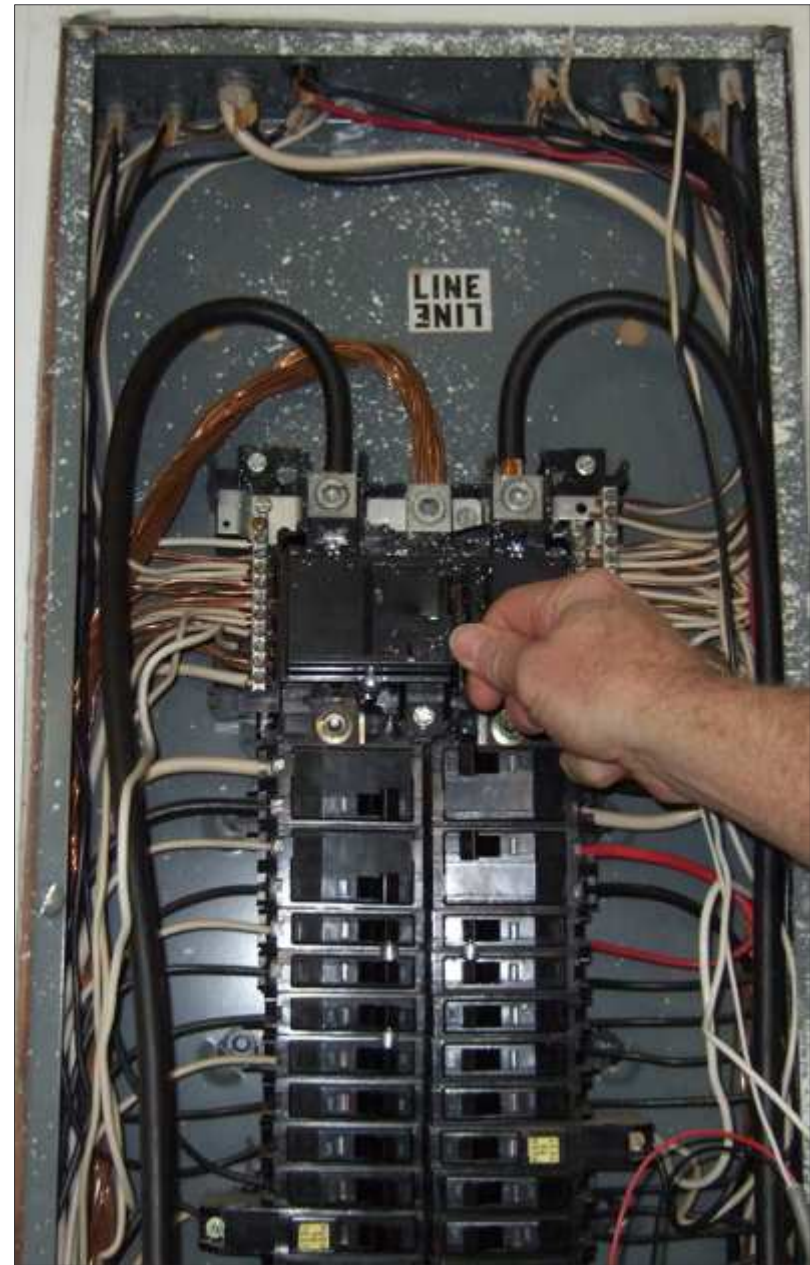
© 2009 Copyright Energy, Inc.

All rights reserved

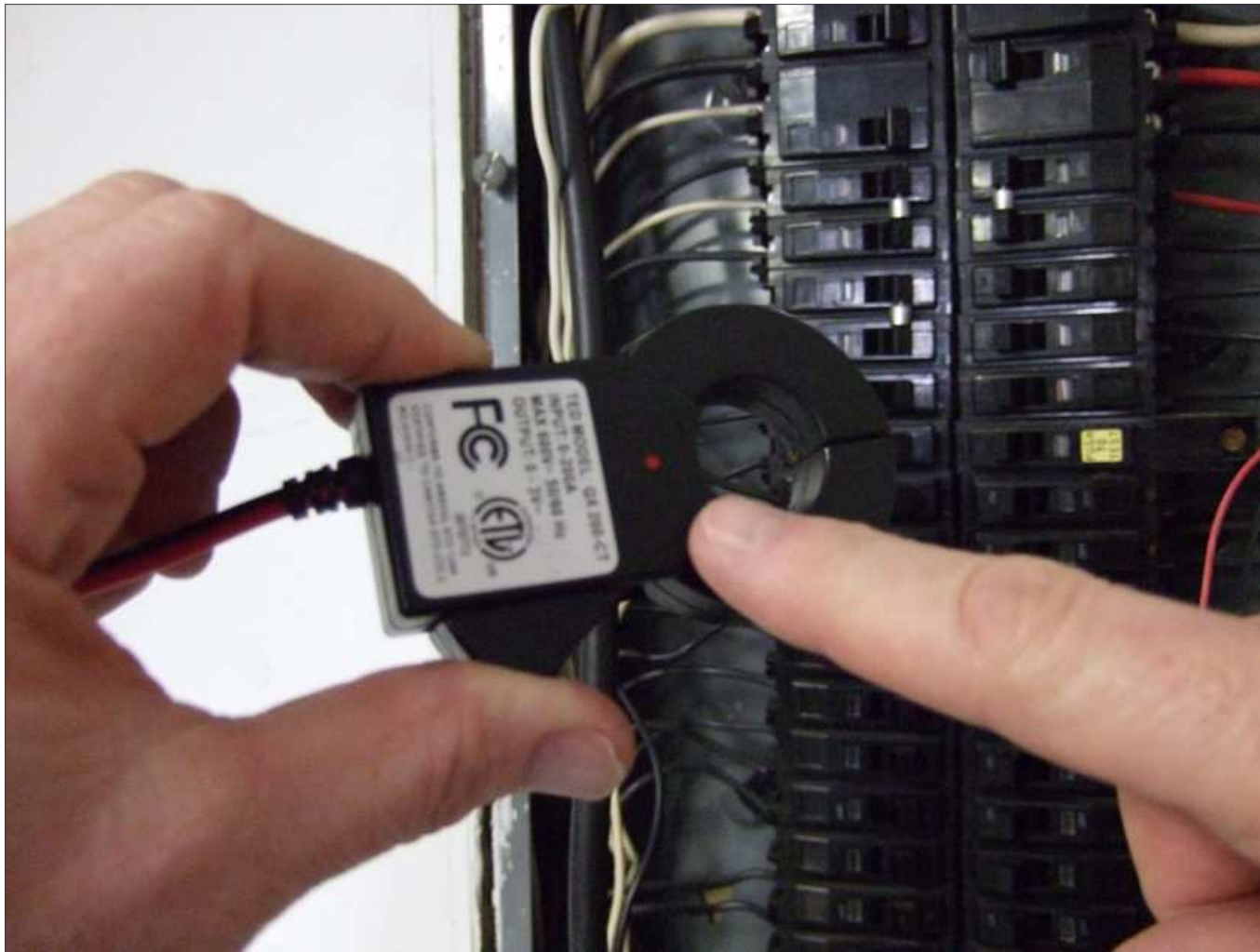
Typical Combination Electrical Panel 200Amp



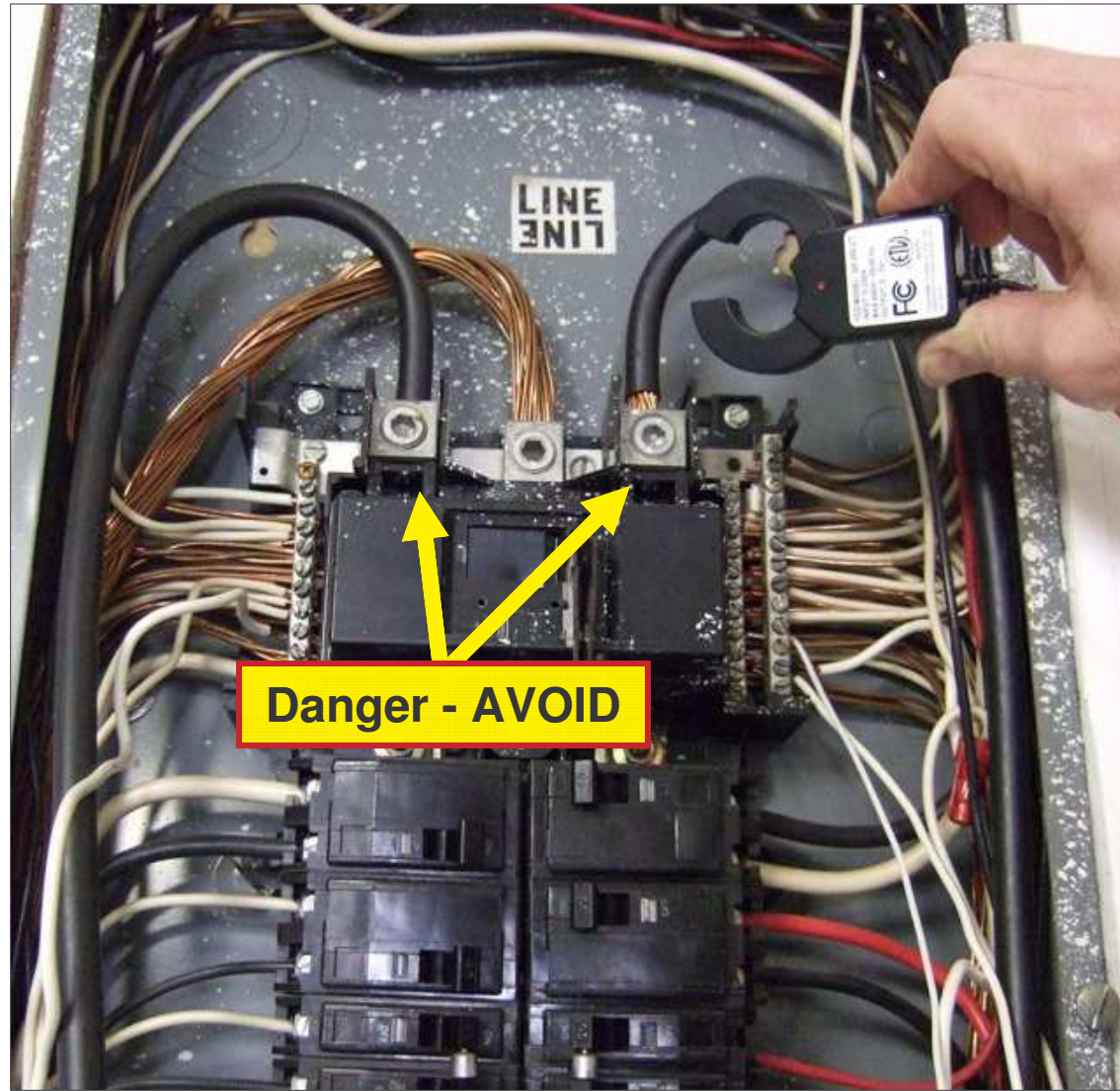
Turn OFF the Main Breaker



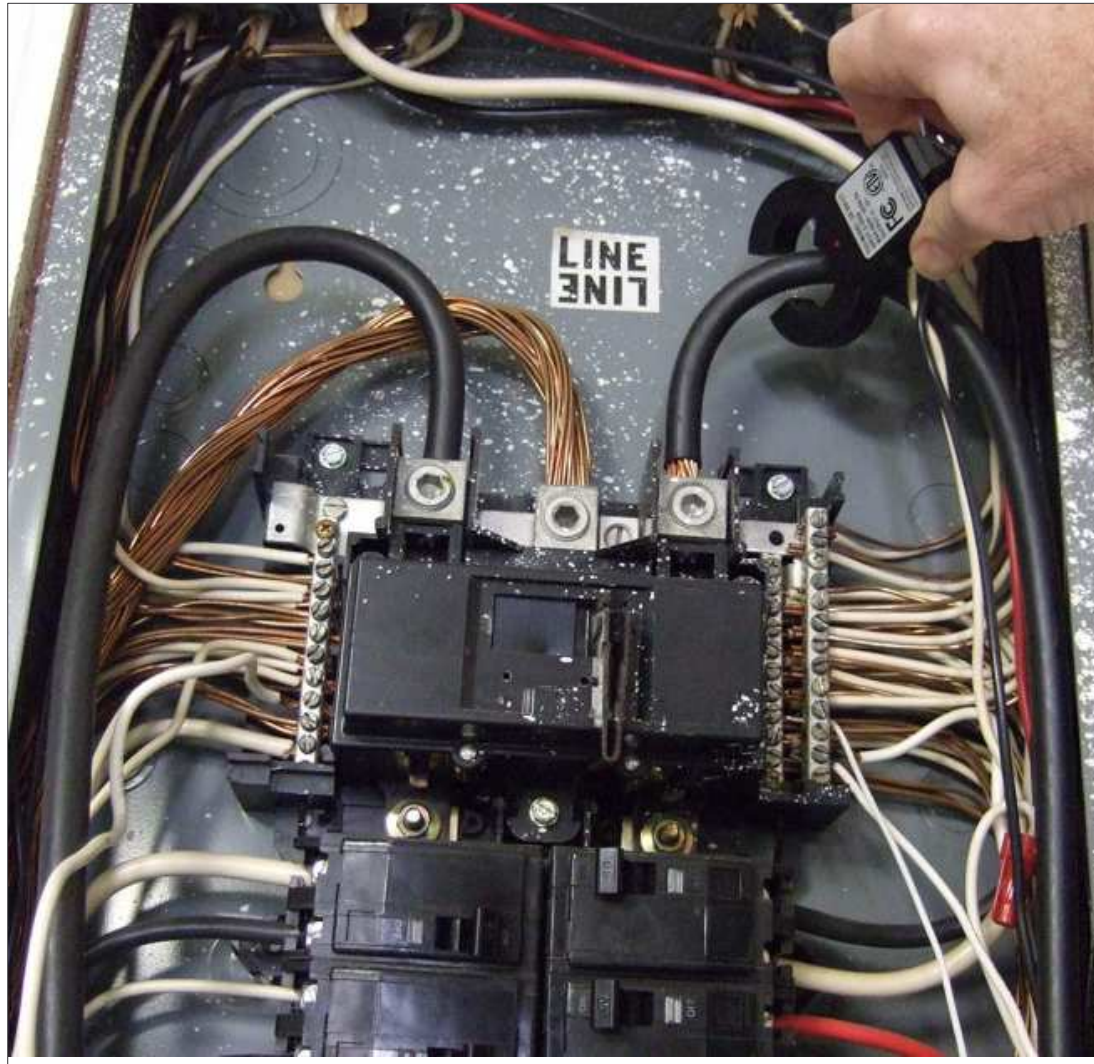
There is a **RED** Dot on one side of the CTs. Note them when installing CTs.



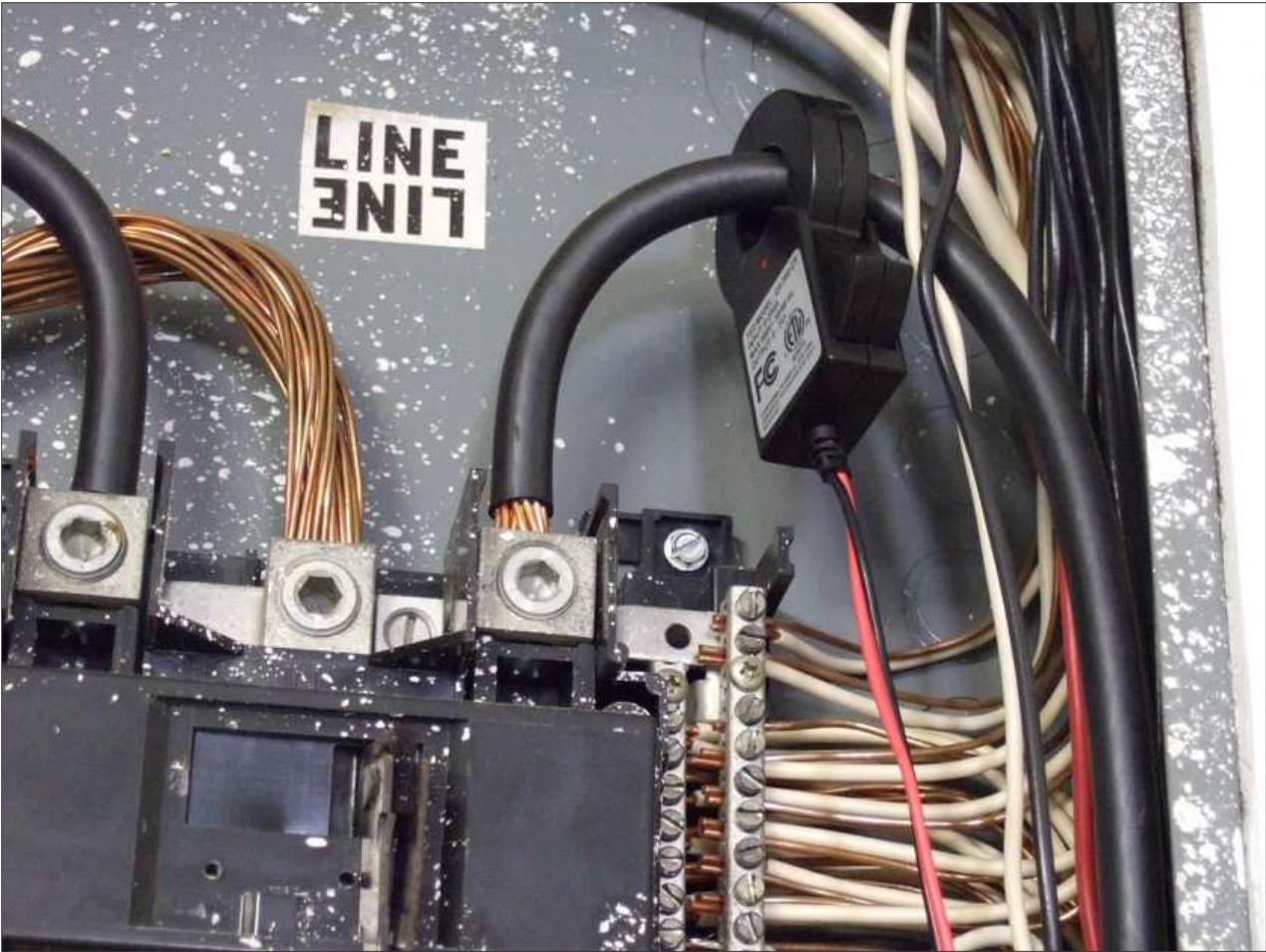
Note **RED** polarity dot facing Main Breaker



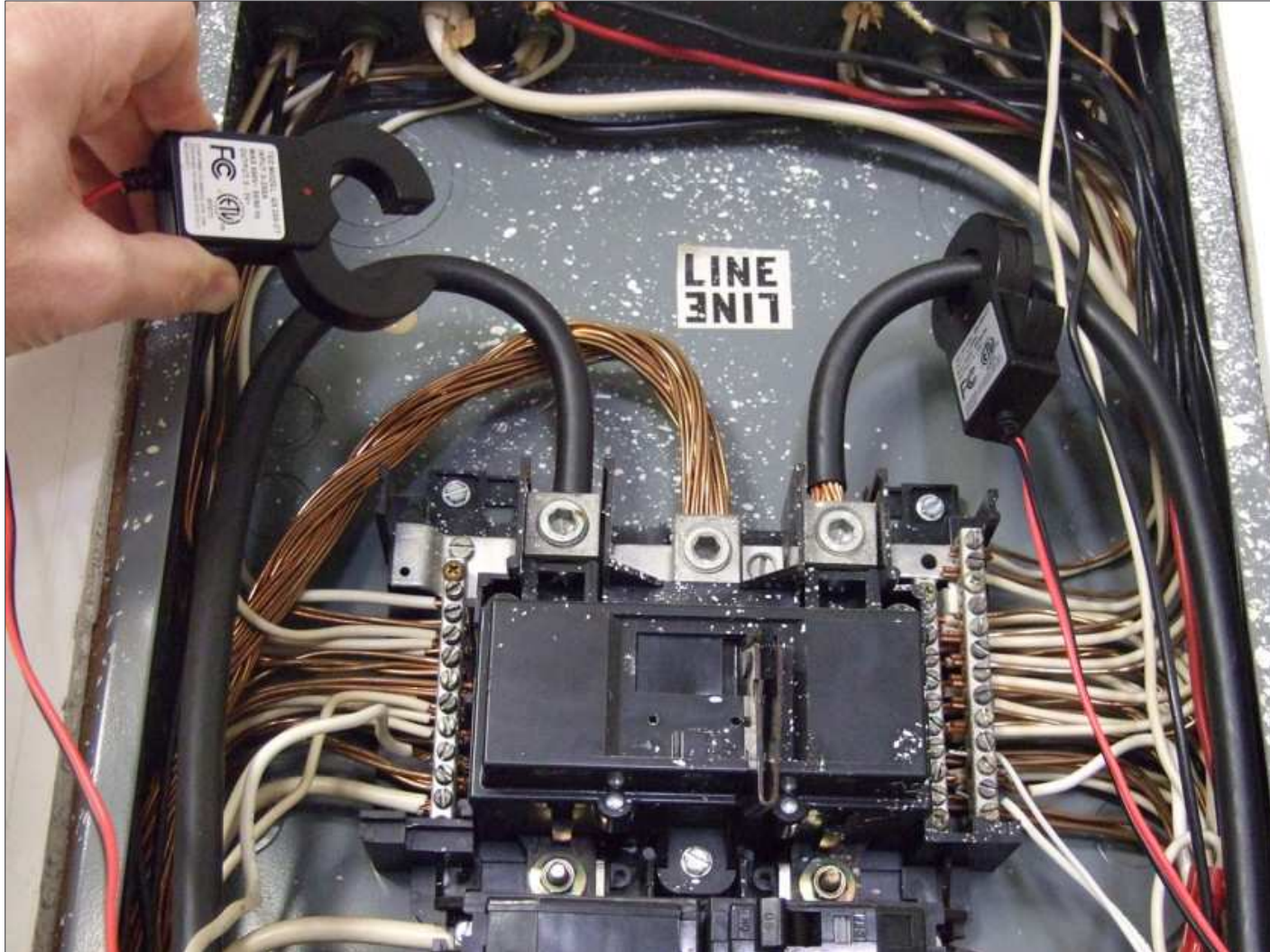
Clip CT completely over conductor



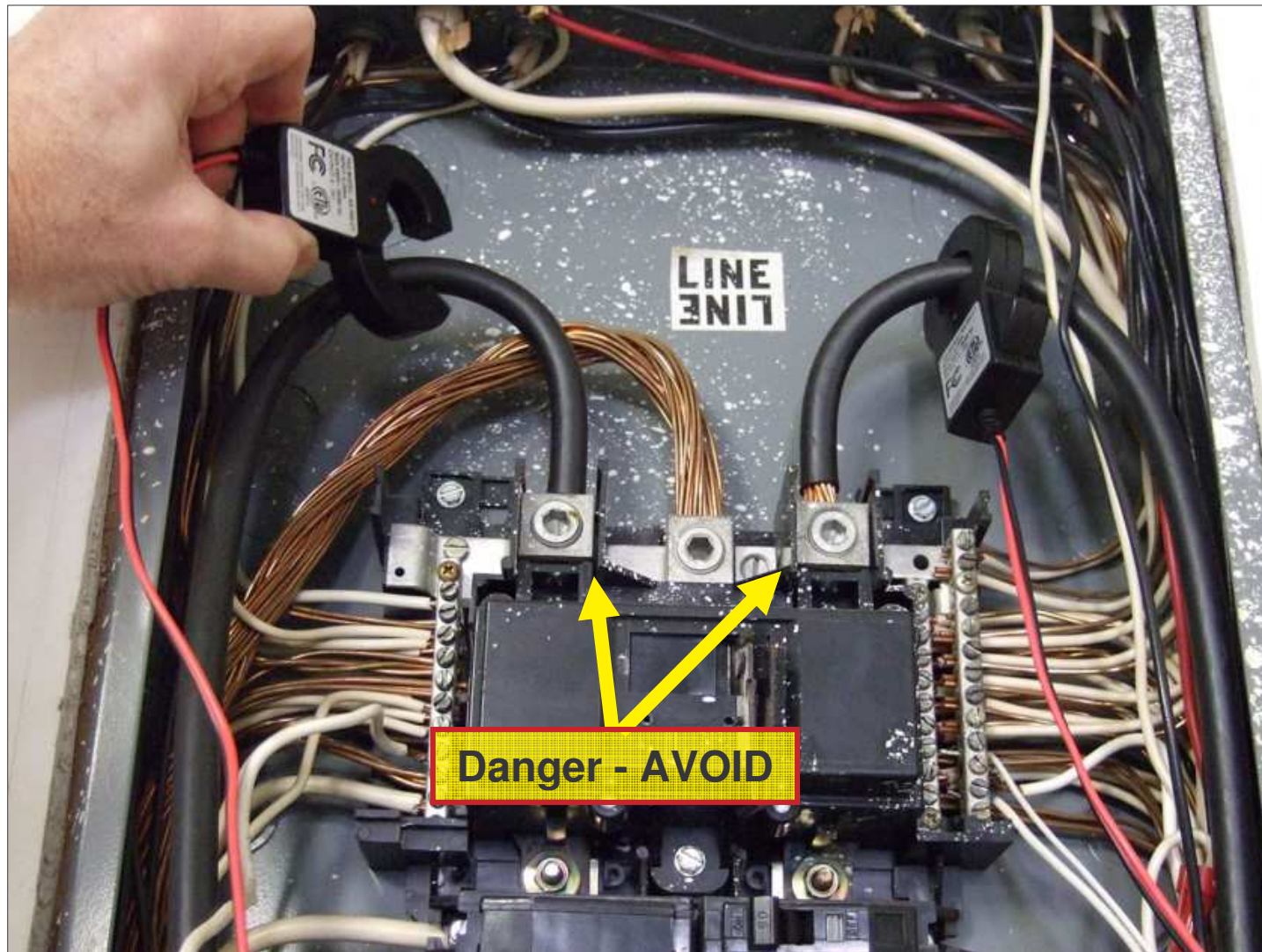
Correctly connected CT – (it does not need to be snug on conductor)



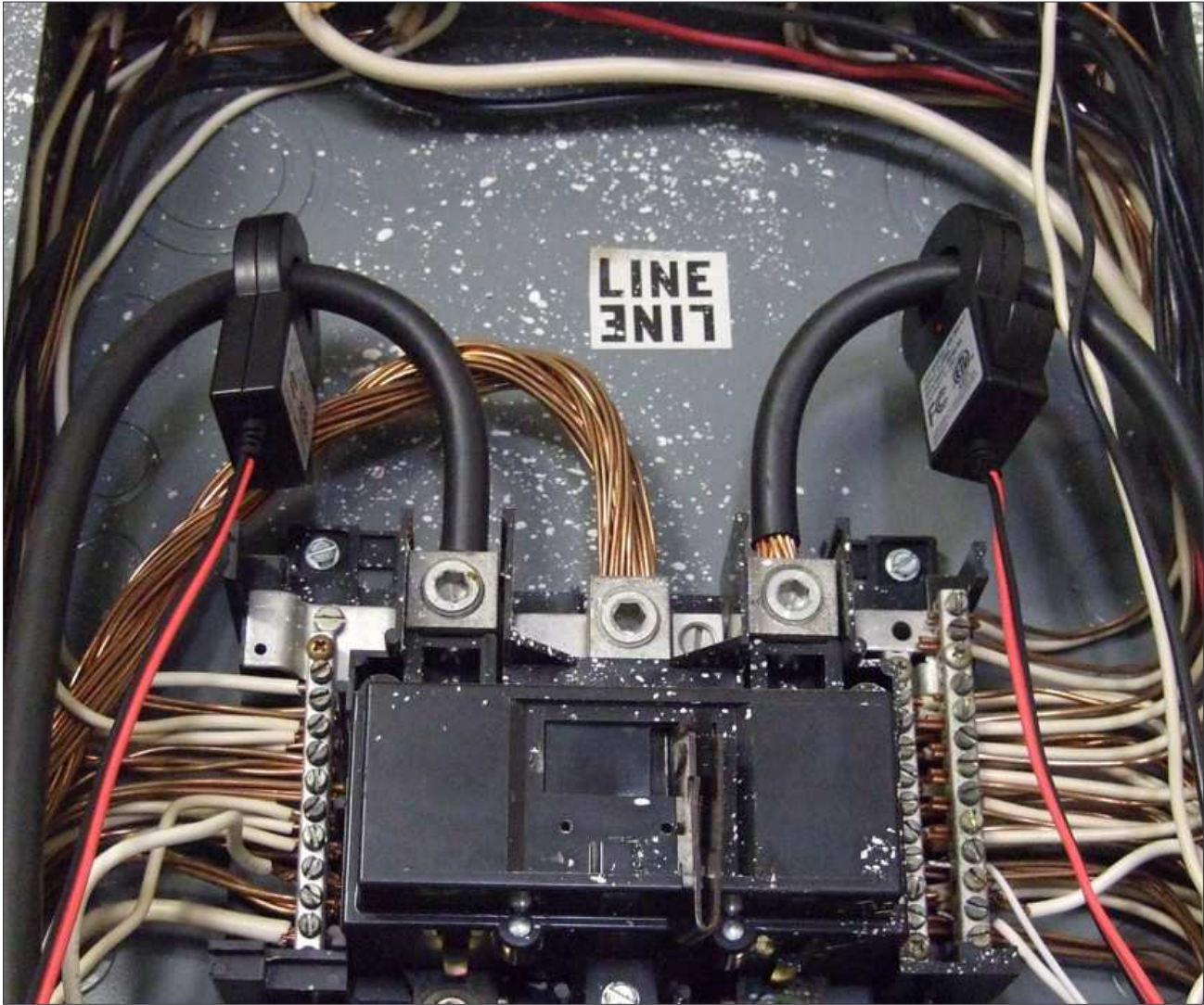
Connect 2nd CT the same as the 1st. NOTE that the RED polarity dots are both facing the same direction of current flow



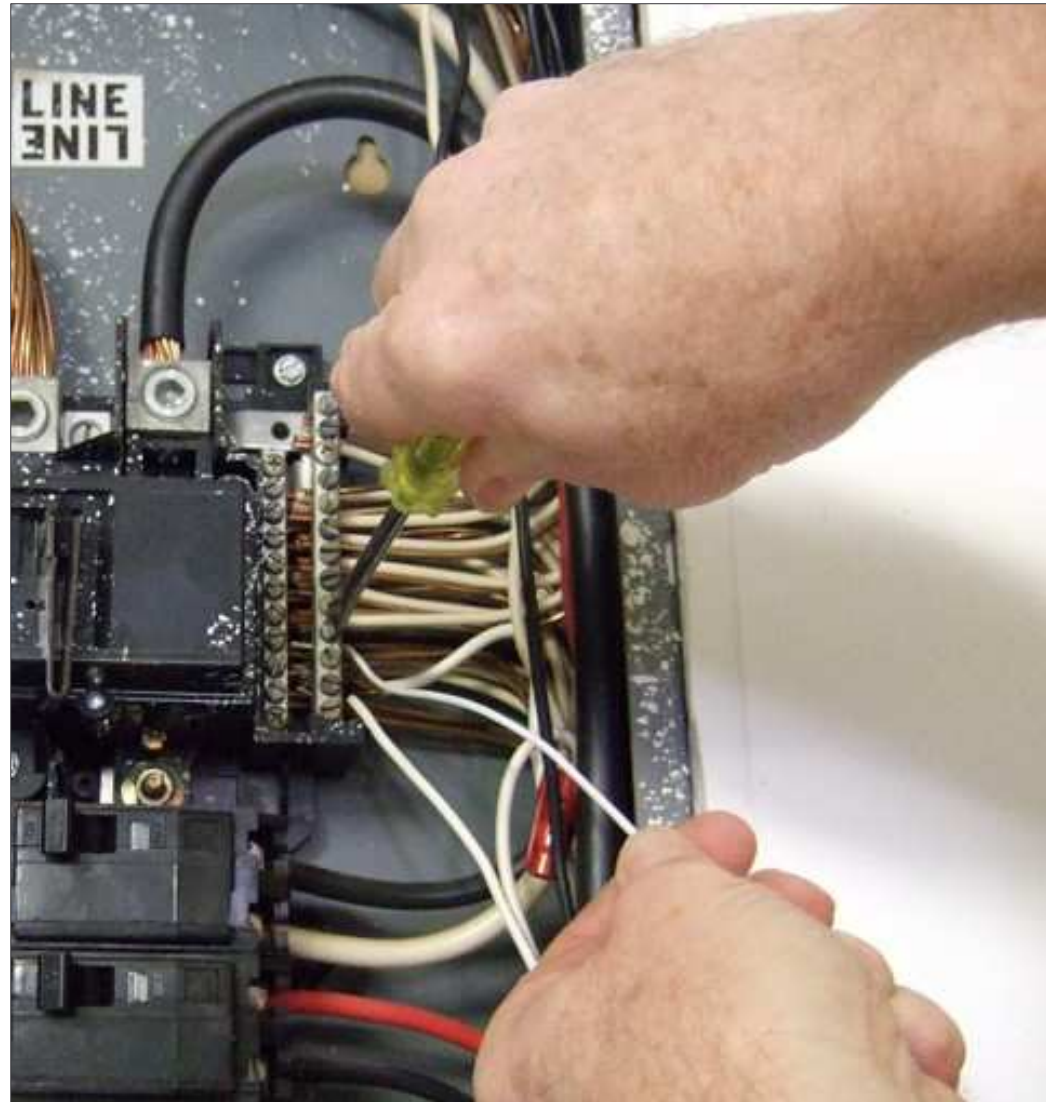
Connect CT using special care to avoid hot lugs



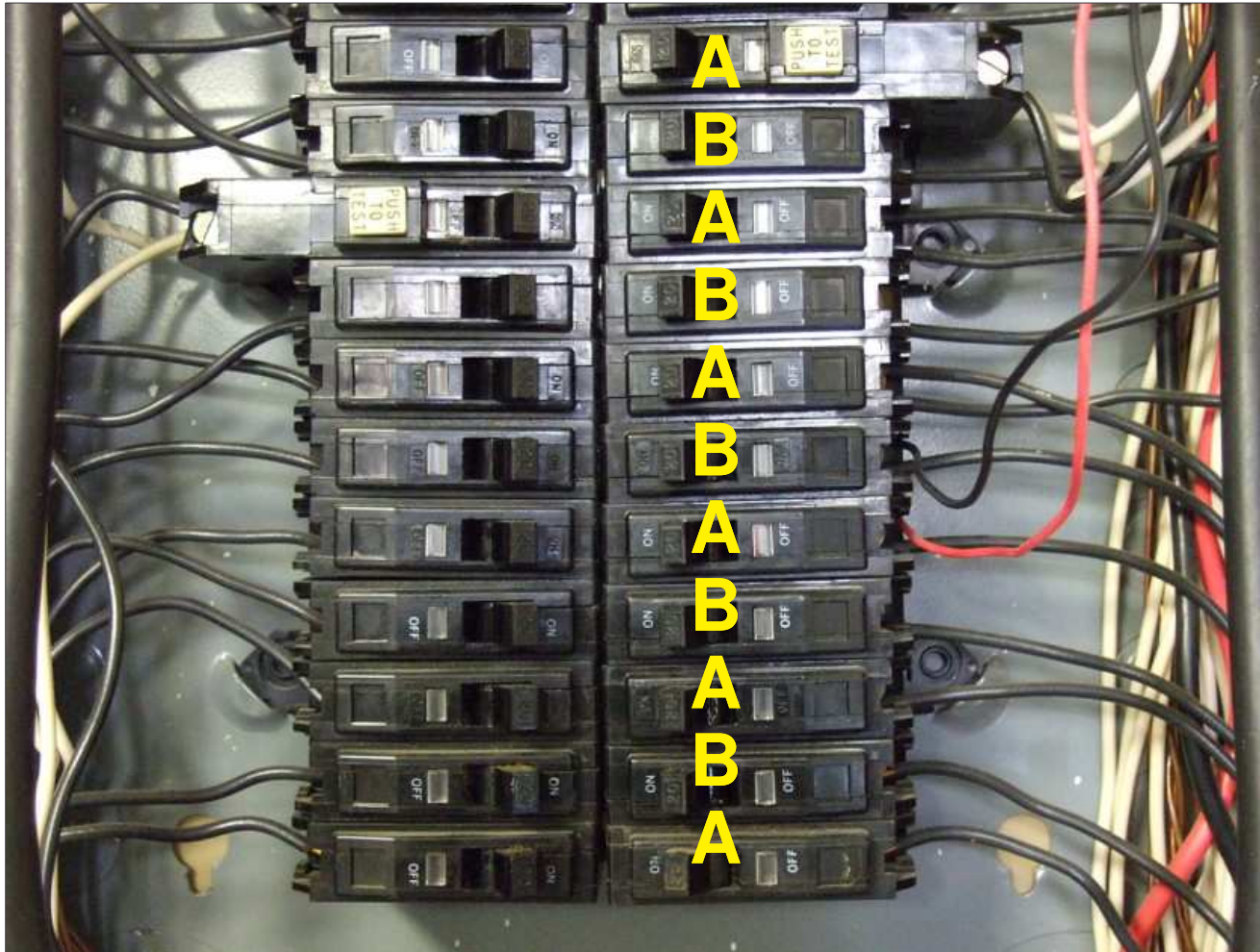
Correctly connected CTs



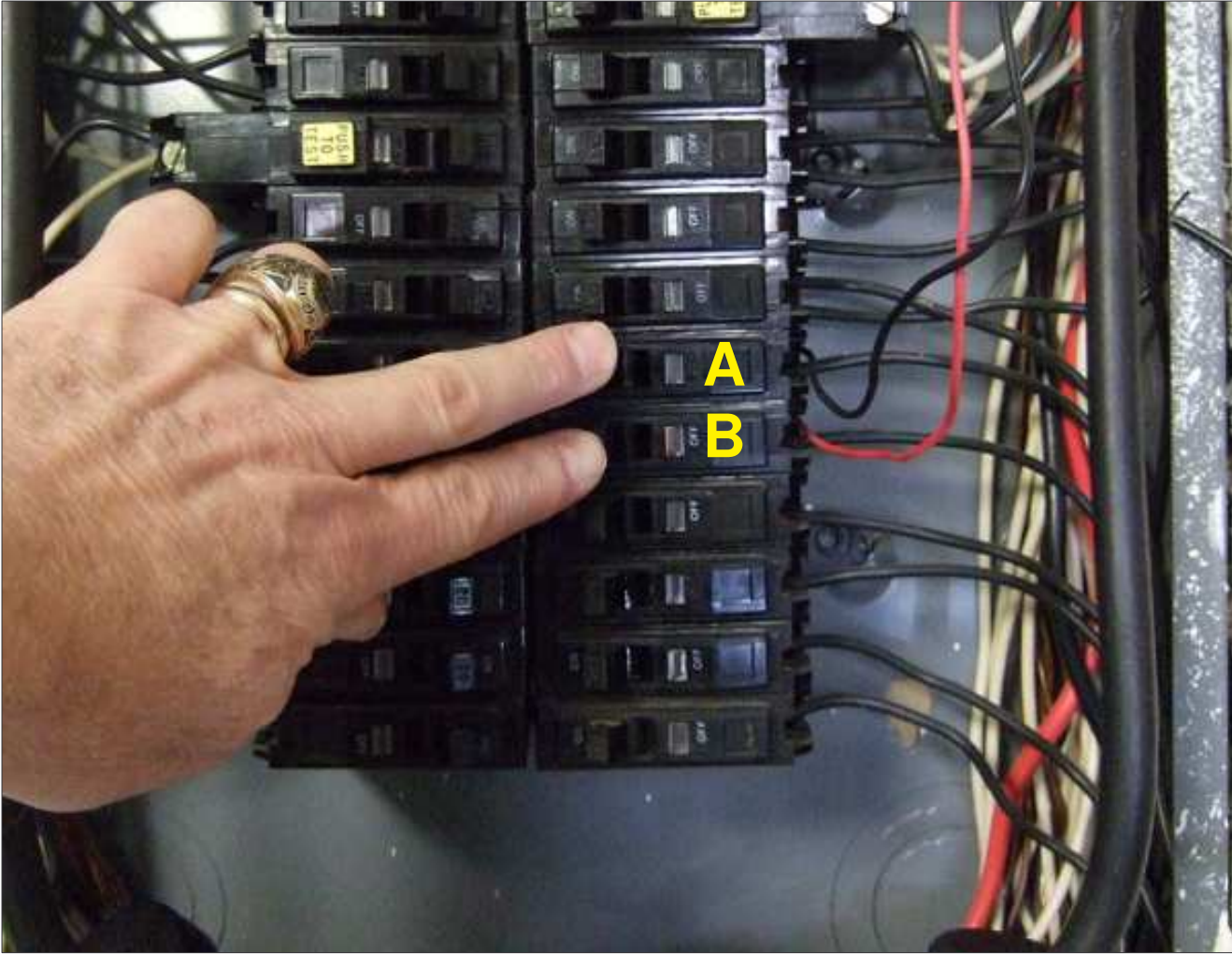
**Connect the WHITE lead of
the MTU Power Cable to any
available position in the
Neutral Bus**



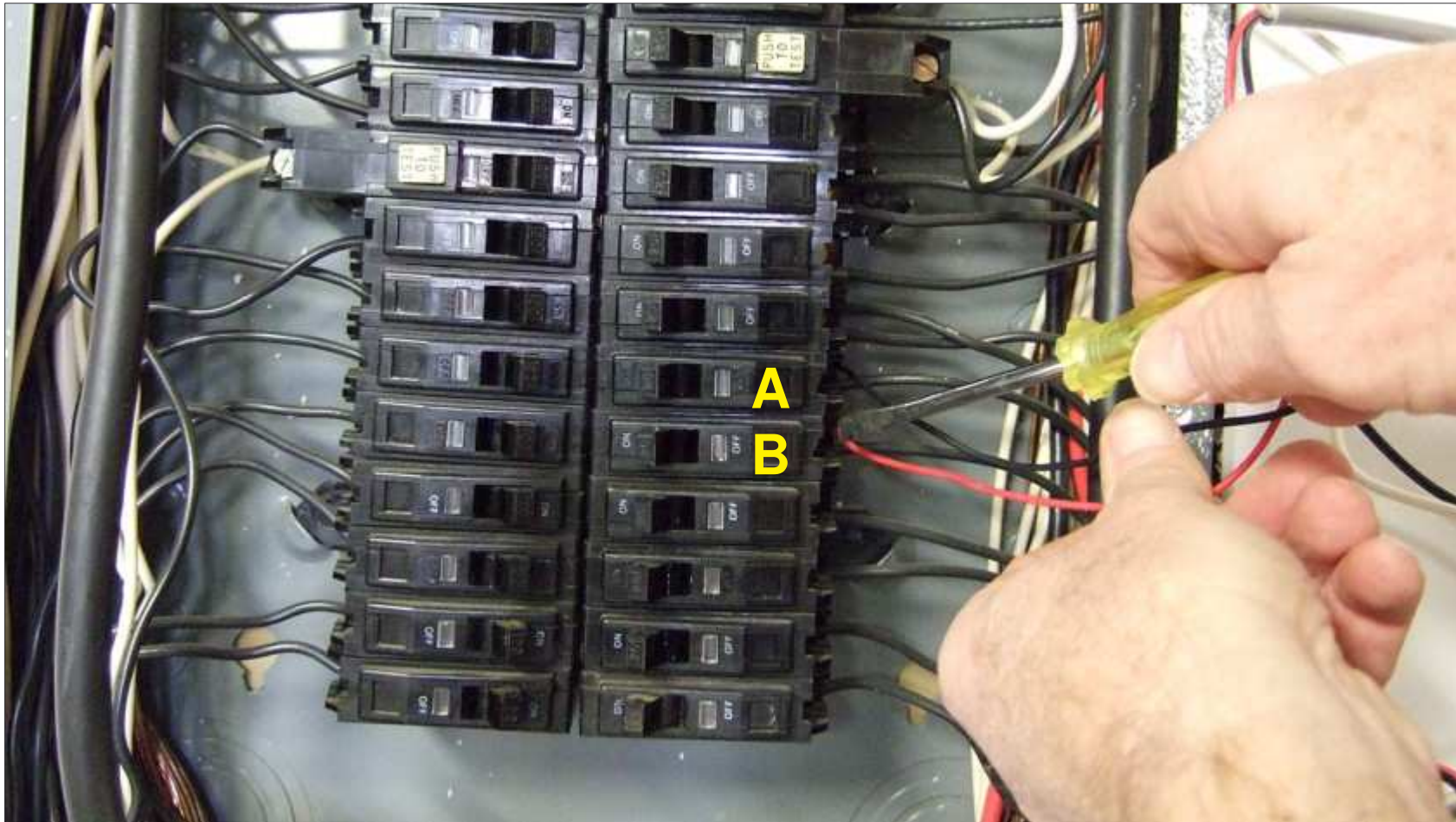
Select an “A” phase *and* “B” phase circuit to connect the Red/Black leads;
(DO NOT connect black and red to the same phase)
15/20/30 amp breakers are OK.



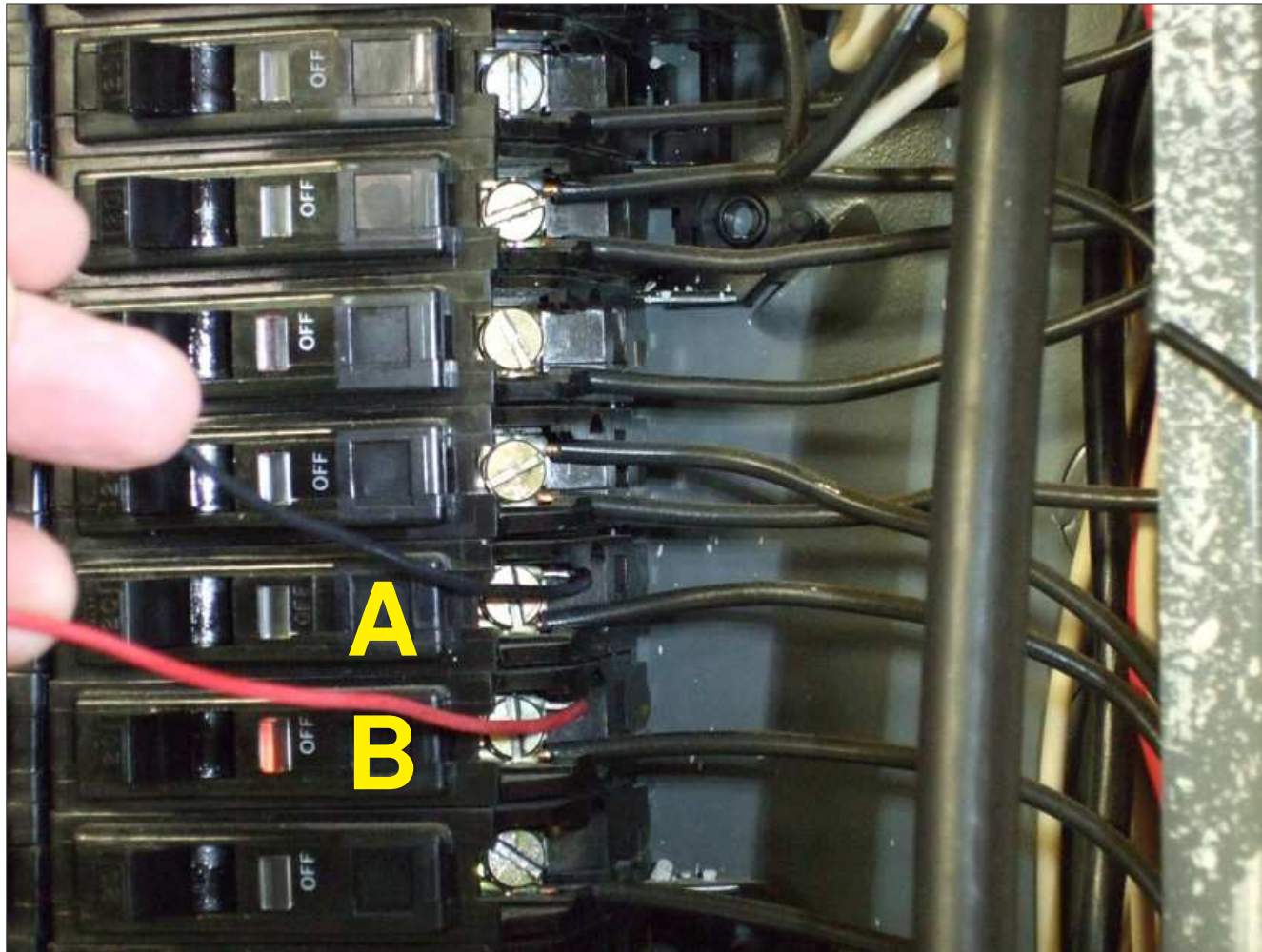
Turn the breakers OFF on the selected “A” and “B” phase circuits as a precaution



Connect the **RED** and **BLACK** leads from the MTU Power Cable to the Selected “A” and “B” phase circuit breakers



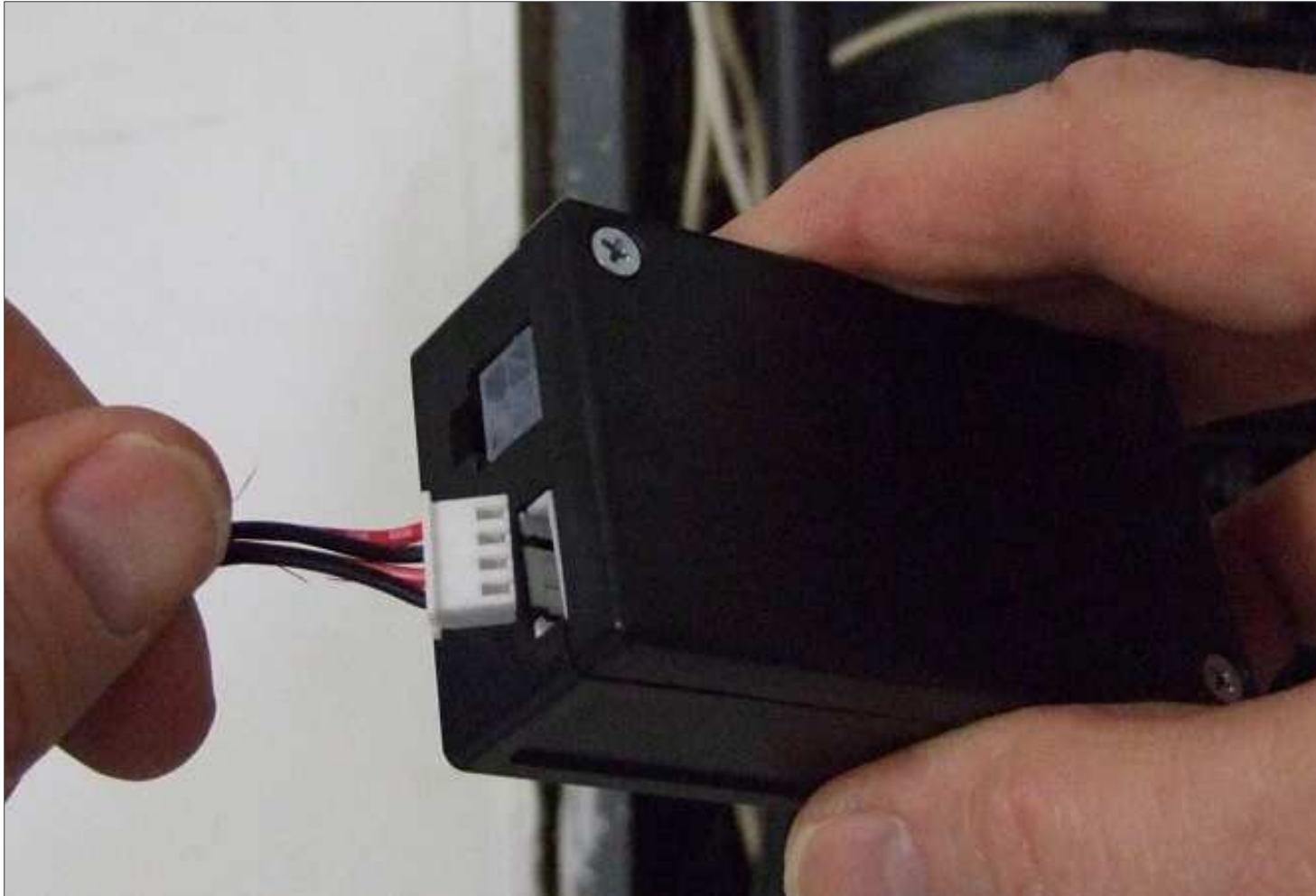
Correctly connected **RED** and **BLACK** leads from the Power Cable
- one connected to each phase



Note the 'guides' on the end of the CT connector. They fit snugly in the slot of the MTU



The CT connector will fit snugly into the MTU – note the 4 grooves in the top of the CT connector (the 2 “guides” are on the bottom side)



The last connection is the Power Cable base. There is only 1 way it can be connected. Line up the connector and snap it in to the MTU.



After all the connections are made and the MTU Power Cable is connected to the MTU, turn on the Main Breaker and branch circuit breakers. The green LED on the MTU should light up at this point.

For troubleshooting purposes, you may want to leave the panel cover off until you connect the other components (GATEWAY and DISPLAY) to be sure the system is operating properly.

If you have any installation questions, please call our toll-free Support Line: 1(800) 959-5833